



Discovery through partnership | Excellence through quality

VPS35 ELISA Kit

Catalog# SKT-141-96 (96-Well Kit)

Catalog# SKT-141-480 (5 x 96-Well Kit)

Colorimetric detection of VPS35

TABLE OF CONTENTS

GENERAL INFORMATION	3	Materials Supplied
	4	Precautions
	4	If You Have Problems
	4	Storage and Stability
	4	Materials Needed but Not Supplied
	5	Assay Precautions
INTRODUCTION	6	Background
	6	About This Assay
	7	Western Blot Analysis of Capture Antibody
	8	Assay Overview
PRE-ASSAY PREPARATION	9	Sample Preparation
	13	Other Reagent Preparation/Handling
ASSAY PROTOCOL	15	Performing the Assay
ANALYSIS	18	Calculations
	19	Performance Characteristics
RESOURCES	21	References
	22	Warranty and Limitation of Remedy
	23	Plate Template
	24	Notes

GENERAL INFORMATION

Materials Supplied

Catalog No.	Item	Quantity/Size
SKC-141A	Anti-VPS35 Immunoassay Plate	1 Plate
SKC-141B	5X VPS35 Extraction Reagent	1 bottle/10mL
SKC-141C	Recombinant VPS35 Standard	2 vials
SKC-141D	Standard and Sample Diluent (Red)	1 bottle/50mL
SKC-141E	10X Wash Buffer Concentrate	1 bottle/100mL
SKC-141F	Anti-VPS35 Biotinylated Antibody Concentrate	1 vial/150μL
SKC-141G	Anti-VPS35 Biotinylated Antibody Diluent (Green)	1 bottle/13mL
SKC-141H	Streptavidin: HRP Concentrate	1 vial/150μL
SKC-141I	Streptavidin: HRP Diluent (Purple)	1 bottle/13mL
SKC-141J	TMB Substrate	1 bottle/13mL
SKC-141K	Stop Solution	1 bottle/13mL

If any of the items listed above are damaged or missing, please contact our Customer Service department at (250) 294-9065. We cannot accept any returns without prior authorization.



WARNING: Not for human or animal disease diagnosis or therapeutic drug use.

Precautions

Please read these instructions carefully before beginning this assay.

The reagents in this kit have been tested and formulated to work exclusively with StressMarq Biosciences Inc.'s StressXpress® ELISA Kits. This kit may not perform as described if any reagent or procedure is replaced or modified.

For research use only. Not for human or diagnostic use.

If You Have Problems

Technical Service Contact Information

Phone:	250-294-9065
Fax:	250-294-9025
E-Mail:	techsupport@stressmarq.com
Hours:	M-F 9:00 AM to 5:00 PM PST

In order for our staff to assist you quickly and efficiently, please be ready to supply the lot number of the kit (found on the outside of the box).

Storage and Stability

All reagents, with the exception of the standard and the Streptavidin: HRP Concentrate, are stable as supplied at 4°C. The standard and Streptavidin: HRP Concentrate should be stored at -20°C. Unused wells should be resealed with desiccant in the foil pouch provided, and stored at 4°C until the kits expiry date.

Materials Needed But Not Supplied

- Ultra pure water
- Additional reagents and materials for cell lysate and tissue extract preparation, including protease inhibitors
- Precision pipettors, with disposable plastic tips
- Polypropylene or polyethylene tubes to prepare samples – do not use polystyrene, polycarbonate or glass tubes
- A container to prepare 1X Wash Buffer
- A wash bottle or an automated 96-well plate washer
- Disposable reagent reservoirs
- Shaking Plate Incubator
- A standard microtiter plate reader for measuring absorbance at 450 nm
- Adhesive plate sealers

Assay Precautions

- All ELISA reagents must be at room temperature (20-25°C) before use.
- Vigorous plate washing is essential.
- Use new disposable pipette tips for each transfer to avoid cross-contamination.
- Use a new adhesive plate cover for each incubation step.
- Minimize lag time between wash steps to ensure the plate does not become completely dry during the assay.
- Avoid microbial contamination of reagents and equipment. Automated plate washers can easily become contaminated thereby causing assay variability.
- Take care not to contaminate the TMB Substrate. Do not expose TMB Substrate solution to glass, foil, or metal. If the solution is blue before use, DO NOT USE IT.
- Individual components may contain preservatives. Wear gloves while performing the assay. Please follow proper disposal procedures.

INTRODUCTION

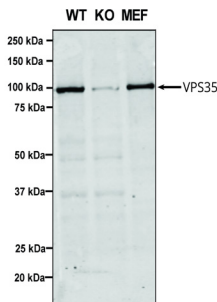
Background

Vacuolar Protein Sorter-35 (VPS35) is a component of the retromer complex, which is essential for endosome-to-Golgi retrieval of membrane proteins. VPS35 mutations such as D620N have been linked to Parkinson's Disease (PD) (1,2) and affect retromer function, protein homeostasis, and mitochondria (3).

About This Assay

StressMarq Biosciences Inc.'s Molecular Signature™ Series ELISA Kit is for the detection of human, mouse or rat VPS35 in cell lysates, and tissue extracts. Each kit contains sufficient components to quantitate the VPS35 concentration in up to 40 samples, tested in duplicate.

Western Blot Validation of Capture Antibody



WT, Mouse A549, MEF showing detection of VPS35 in Western

Blot analysis of Human, Mouse A549, MEF showing detection of VPS35 protein using Mouse Anti-VPS35 Monoclonal Antibody, Clone 7E4 (SMC-602). Lane 1: Molecular Weight Ladder. Lane 2: VPS35 KO A549 cells. Lane 3: mouse embryonic fibroblast cells. Load: 8 μ g each A549 and MEF. Primary Antibody: Mouse Anti-VPS35 Monoclonal Antibody (SMC-602) at 1:5 (tissue culture supernatant). Secondary Antibody: Donkey anti-mouse IRDye 800CW at 1:25000 in TBS-T.

ASSAY OVERVIEW

1. Prepare Standard and samples in Standard and Sample Diluent.
2. Add 100 μ L of Standard or sample to appropriate wells.
3. Cover plate with Plate Sealer and incubate at 37°C for 1 hour shaking at 600rpm.
4. Wash plate four times with 1X Wash Buffer.
5. Add 100 μ L of Biotinylated Antibody Working Solution to each well.
6. Cover plate with Plate Sealer and incubate at 37°C for 1 hour shaking at 600rpm.
7. Wash plate four times with 1X Wash Buffer.
8. Add 100 μ L of Streptavidin-HRP Working Solution to each well.
9. Cover plate with Plate Sealer and incubate at 37°C for 30 minutes.
10. Wash plate four times with 1X Wash Buffer.
11. Add 100 μ L of TMB Substrate to each well.
12. Develop the plate in the dark at room temperature for 30 minutes.
13. Stop reaction by adding 100 μ L of Stop Solution to each well.
14. Measure absorbance on a plate reader at 450 nm.

Sample Preparation

Cell Lysate Preparation

1. Prepare and treat cells as desired.
2. For adherent cells, remove media and rinse cells with ice-cold PBS. Harvest cells with trypsin-EDTA or by using a cell scraper. Centrifuge at 500 x g for 5 minutes. For suspension cells, harvest by centrifugation at 500 x g for 5 minutes.
3. Wash cells by re-suspending the cell pellet in ice-cold PBS. Pellet cells by centrifugation at 500 x g for 5 minutes. Repeat wash for a total of three (3) washes with ice-cold PBS.
4. Use a pipette to carefully remove and discard the supernatant, leaving the cell pellet as dry as possible. The cell pellet may be frozen at -70°C and lysed at a later time, if desired.
5. Calculate the amount of 1X Extraction Reagent required. For every 1×10^6 to 1×10^7 cells, use 1 mL of 1X Extraction Reagent.
6. Prepare 1X Extraction Reagent by diluting 1 part 5X Extraction Reagent with 4 parts ice-cold ultra pure water. For example, if 5 mL of 1X Extraction Buffer is required, dilute 1 mL of 5X Extraction Reagent with 4 mL of ultra pure water.

Note: Use of alternative extraction buffers may contain components which could interfere and compromise the performance of the assay, producing inaccurate results. For best results, use the 1X Extraction Reagent included in this kit.

7. Add protease inhibitors to the 1X Extraction Reagent. Examples of an appropriate protease inhibitor cocktail includes 0.1 mM PMSF, 1 µg/mL leupeptin, 1 µg/mL aprotinin, and 1 µg/mL pepstatin. Alternatively, a commercially available protease cocktail, obtainable from a variety of scientific reagent vendors, may also be used.
8. Add appropriate amount of ice-cold 1X Extraction Reagent including protease inhibitors to the cell pellet.

Note: If excess buffer is used the protein concentration will be lower.

9. Pipet up and down to break up the cell pellet until the cell suspension is homogeneous and no clumps are visible.
10. Incubate on ice for 30 minutes with occasional mixing or sonification.

Note: To increase protein yields and decrease sample viscosity, aspirate the cell pellet 5-10 times through a 21 ½ gauge needle or sonicate the cell pellet for 30 seconds with 50% pulse during the incubation.

11. Transfer the mixture to a fresh micro centrifuge tube and centrifuge at ~21,000 x g for 10 minutes at 4°C.
12. Transfer the supernatant (cell lysate) to a fresh tube for analysis. Avoid disturbing the cell pellet. Discard the cell pellet once the supernatant is harvested. The cell lysate is now ready for analysis in the assay.
13. Alternatively, store the cell lysate in single-use aliquots at -70°C. It is recommended that a protein determination assay be performed and the extracts aliquoted into convenient amounts prior to storing at -70°C to avoid multiple freeze-thaw cycles.

Tissue Extract Preparation

1. Harvest tissue to be analyzed. Tissues may be flash frozen, stored at -70°C and prepared at a later time, if desired.
2. Calculate the amount of 1X Extraction Reagent required. For each 0.5 cm³ piece of tissue, use 1 mL of 1X Extraction Reagent.
3. Prepare 1X Extraction Reagent by diluting 1 part 5X Extraction Reagent with 4 parts ice-cold ultra pure water. For example, if 5 mL of 1X Extraction Buffer is required, dilute 1 mL of 5X Extraction Reagent with 4 mL of ultra pure water.

Note: Use of alternative extraction buffers may contain components which could interfere and compromise the performance of the assay, producing inaccurate results. For best results, use the 1X Extraction Reagent included in this kit.

4. Add protease inhibitors to the 1X Extraction Reagent. Examples of an appropriate protease inhibitor cocktail includes 0.1 mM PMSF, 1 µg/mL leupeptin, 1 µg/mL aprotinin, and 1 µg/mL pepstatin. Alternatively, a commercially available protease cocktail, obtainable from a variety of scientific reagent vendors, may also be used.
5. Place the tissue in a mortar and add sufficient volume of liquid nitrogen to cover the tissue.
6. Allow the liquid nitrogen to evaporate. The tissue should be thoroughly frozen.
7. Grind the frozen tissue to a powder with a pestle.
8. Add appropriate amount of ice-cold 1X Extraction Reagent including protease inhibitors to the processed tissue.
9. Continue to homogenize the tissue with the pestle until the tissue suspension is

homogeneous.

10. Transfer the extract to a fresh micro centrifuge tube and centrifuge at $\sim 21,000 \times g$ for 10 minutes at 4°C .
11. Transfer the supernatant (tissue extract) to a fresh tube for analysis. Avoid disturbing the cell pellet. Discard the cell pellet once the supernatant is harvested. The tissue extract is now ready for analysis in the assay.
12. Alternatively, store the tissue extract in single-use aliquots at -70°C . It is recommended that a protein determination assay be performed and the extracts aliquoted into convenient amounts prior to storing at -70°C to avoid multiple freeze-thaw cycles.

Sample Handling

- All blood components and biological materials should be handled as potentially hazardous. Follow universal precautions when handling and disposing of infectious agents.
- 100 μl of diluted sample is required per well.
- Samples must be assayed in duplicate each time the assay is performed.
- Samples should be frozen if not analyzed shortly after harvest. For long-term storage, aliquot and freeze samples. Avoid repeated freeze-thaw cycles when storing samples.
- If particulate is present in samples, centrifuge prior to analysis.
- If the integrity of the sample is of concern, make a note on the Plate Template and interpret results with caution.

Sample Dilution

- Samples must first be diluted prior to testing.
- Suggested dilution range for samples: 1:10 to 1:160. There may be considerable variation dependent on the sample type.

Note: If values for samples are not within the range of the standard curve, optimal sample dilutions need to be determined.

- Prepare at least 250 μL of sample in Standard and Sample Diluent. Mix samples well

prior to analysis.

Other Reagent Handling/ Preparation

Standard Preparation

1. Reconstitute the Recombinant VPS35 Standard vial with 1mL of Standard and Sample Diluent for a concentration of 20 ng/mL.
2. Measure 250 μ L of the reconstituted VPS35 Standard and dilute it with 750 μ L of Standard and Sample Diluent for a concentration of 5000 pg/mL. Mix well. This is

Tube #1.

3. Label six (6) tubes, corresponding to the additional standard curve points 2500 pg/mL, 1250 pg/mL, 625 pg/mL, 312.5 pg/mL, 156.25 pg/mL and 78.125 pg/mL.
4. Add 250 μ L of Standard and Sample Diluent to Tubes #2, 3, 4, 5, 6 and 7.
5. Transfer 250 μ L from Tube #1 to Tube #2. Mix well.
6. Similarly, complete the dilution series to generate the remaining standards (250 μ L from Tube #2 to Tube #3, mix well, etc.) up to and including Tube #7.
7. Finally, add 250 μ L of Sample and Standard Diluent to another tube (Tube #8), which is the zero standard (0 ng/mL).

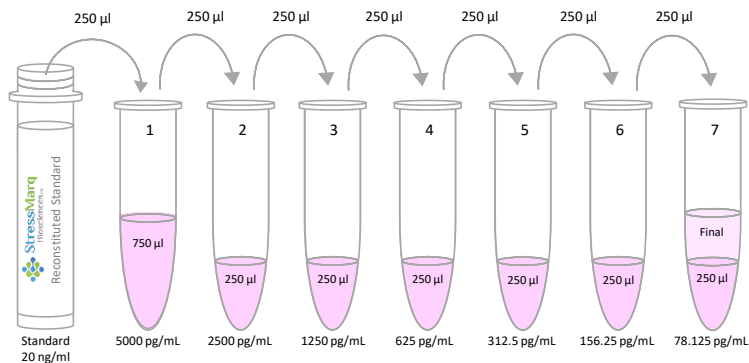


Figure 2. Preparation of the VPS35 Standard

1X Wash Buffer Preparation

- Prepare 1X Wash buffer by diluting 10X Wash Buffer in ultra pure water. For example, if preparing 1 L of 1X Wash Buffer, dilute 100 mL of 10X Wash Buffer into 900 mL of ultra pure water. Mix well. Store reconstituted 1X Wash Buffer at 2-8°C for up to one (1) month. Do not use 1X Wash Buffer if it becomes visibly contaminated during storage.

Biotinylated Antibody Working Solution Preparation

- Determine the amount of Biotinylated Antibody Working Solution required. For every

strip-well used (8-wells), prepare 1 mL of Biotinylated Antibody Working Solution.

- Prepare Biotinylated Antibody Working Solution by diluting Biotinylated Antibody Concentrate 1:100 with Biotinylated Antibody Diluent. For example, if 12 mL of Biotinylated Antibody Working Solution is required (one whole plate), dilute 120 μ L of Biotinylated Antibody Concentrate in 12 mL Biotinylated Antibody Diluent. Mix well prior to use.

Streptavidin-HRP Working Solution Preparation

- Determine the amount of Streptavidin-HRP Working Solution required. For every strip-well used (8-wells), prepare 1 mL of Streptavidin-HRP Working Solution.
- Prepare Streptavidin-HRP Working Solution by diluting Streptavidin-HRP Concentrate 1:100 with Streptavidin-HRP Diluent. For example, if 12 mL of Streptavidin-HRP Working Solution is required (one whole plate), dilute 120 μ L of Streptavidin-HRP Concentrate in 12 mL Streptavidin-HRP Diluent. Mix well prior to use.

Performing the Assay

Sample Incubation

- Determine the number of strips required. Leave these strips in the plate frame. Place unused strips in the foil pouch with desiccant and seal tightly. Store unused strips at 2-8°C. After completing assay, keep the plate frame for additional assays.
 - Use a Plate Template to record the locations of the standards and unknown samples within the wells.
1. Add 100 μL of appropriately diluted standards or samples to each well. Run each standard, sample, or blank in duplicate.
 2. Carefully cover wells with a new adhesive plate cover. Incubate for one (1) hour at 37°C while shaking at 600rpm.
 3. Carefully remove adhesive plate cover, discard plate contents and wash FOUR times with 1X Wash Buffer as described in the Plate Washing section.

Plate Washing

1. Gently squeeze the long sides of plate frame before washing to ensure all strips remain securely in the frame.
2. Empty plate contents. Use a squirt wash bottle to vigorously fill each well completely with 1X Wash Buffer, then empty plate contents. Repeat procedure three additional times for a total of FOUR washes. Blot plate onto paper towels or other absorbent material.

Note: For automated washing, aspirate plate contents from all wells and flood wells with 1X Wash Buffer. Repeat procedure three additional times for a total of FOUR washes. Additional washes may be necessary. Blot plate onto paper towels or other absorbent material. Take care to avoid microbial contamination of equipment. Automated plate washers can easily become contaminated thereby causing assay variability.

Biotinylated Antibody Incubation

- Prepare only the required amount of Biotinylated Antibody Working Solution for the number of strips being used.
1. Add 100 μL of Biotinylated Antibody Working Solution to each well containing standard, sample or blank. Mix well by gently tapping the plate several times.
 2. Carefully attach a new adhesive plate cover. Incubate plate for one (1) hour at 37°C while shaking at 600rpm..
 3. Carefully remove the adhesive plate cover, discard plate contents and wash FOUR times with 1X Wash Buffer as described in the Plate Washing section.

Streptavidin-HRP Incubation

- Prepare only the required amount of Streptavidin-HRP Working Solution for the number of strips being used.
1. Add 100 μL of Streptavidin-HRP Working Solution to each well containing standard, sample or blank.
 2. Carefully attach a new adhesive plate cover. Incubate plate for 30 minutes at 37°C.
 3. Carefully remove the adhesive plate cover, discard plate contents and wash FOUR times with 1X Wash Buffer as described in the Plate Washing section.

TMB Substrate Incubation and Reaction Stop

- Only remove the required amount of TMB Substrate and Stop Solution for the number of strips being used.
 - Do NOT use a glass pipette to measure the TMB Substrate solution. Do NOT cover the plate with aluminum foil or metalized mylar. Do NOT return leftover TMB Substrate to bottle. Do NOT contaminate the unused TMB Substrate. If the solution is blue before use, DO NOT USE IT!
1. Add 100 μL of TMB Substrate into each well.
 2. Allow the enzymatic color reaction to develop at room temperature (20-25°C) in the dark for 30 minutes. Do NOT cover plate with a plate sealer. The substrate reaction yields a blue solution.

3. After 30 minutes, stop the reaction by adding 100 μ L of Stop Solution to each well. Tap plate gently to mix. The solution in the wells should change from blue to yellow.

Absorbance Measurement

Note: Evaluate the plate within 30 minutes of stopping the reaction.

1. Wipe underside of wells with a lint-free tissue.
2. Measure the absorbance on an ELISA plate reader set at 450 nm.

Many plate readers come with data reduction software that plot data automatically. Alternatively a spreadsheet program can be used.

Calculations

- Duplicate absorbance values should be within 10% of each other. Care should be taken when interpreting data with differences in absorbance values greater than 10%.
- 1. Prepare a standard curve to determine the amount of VPS35 in an unknown sample. Plot the average absorbance obtained for each standard concentration on the vertical (Y) axis versus the corresponding VPS35 concentration on the horizontal (X) axis using graph paper or curve-fitting software.
- 2. Calculate the VPS35 concentration in unknown samples using the prepared standard curve. Determine the amount of Hsp90 α in each unknown sample by noting the VPS35 concentration (X axis) that correlates with the absorbance value (Y axis) obtained for the unknown sample.
- 3. Multiply the VPS35 concentration obtained by the dilution factor to determine the amount of VPS35 in the undiluted sample.

Performance Characteristics

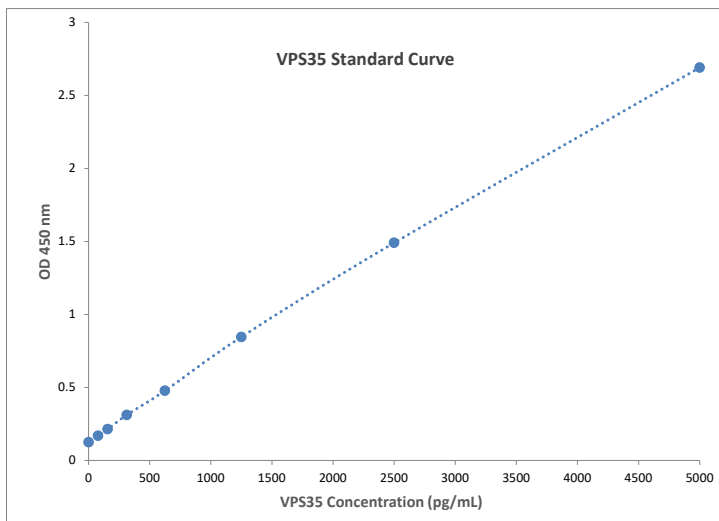


Figure 3. Typical standard curve

Note: This typical standard curve was generated using the VPS35 ELISA Kit Protocol. This standard curve is for demonstration only. A standard curve must be generated for each assay.

Assay Range: 78.125 - 5000 pg/mL

- Suggested standard curve points are 5000 pg/mL, 2500 pg/mL, 1250 pg/mL, 625 pg/mL, 312.5 pg/mL, 156.25 pg/mL, 78.125 pg/mL, and 0 ng/mL.

Assay Specificity and Species Reactivity

- This assay is specific for VPS35.
- The VPS35 ELISA has been validated for the detection of human, mouse and rat VPS35

Sensitivity:

The calculated sensitivity of the VPS35 ELISA is 50 pg/mL.

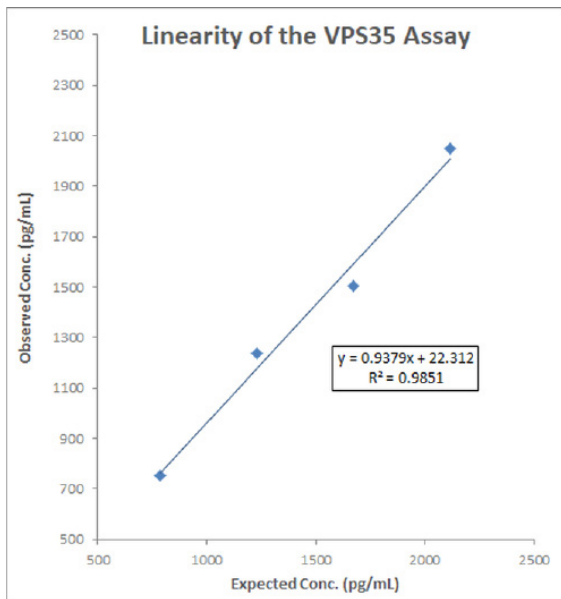
Assay Limitations

- This assay has been validated for use with cell lysates, and tissue extracts. Other sample types or matrices (e.g. urine, cerebrospinal fluid, cell culture supernatant, etc.) may contain interfering factors that can compromise the performance of the assay or produce inaccurate results.
- Some samples may contain higher levels of interfering factors that can produce abnormal results.
- If values for samples are not within the range of the standard curve, optimal sample dilutions need to be determined.
- The use of assay reagents not provided in this kit can compromise the performance of this assay.
- Do not mix components with reagents from other kits with different lot numbers.

Linearity

Linearity was determined by using low (rat kidney) and high (mouse kidney) natural samples, diluted 1/100 and mixed in various proportions.

Low Rat Kidney	High Mouse Kidney	Expected (pg/ mL)	Observed (pg/ mL)	% Recovery
80%	20%	789	752	95%
60%	40%	1232	1237	100%
40%	60%	1675	1504	90%
20%	80%	2118	2047	97%
Mean Recovery				95.5%



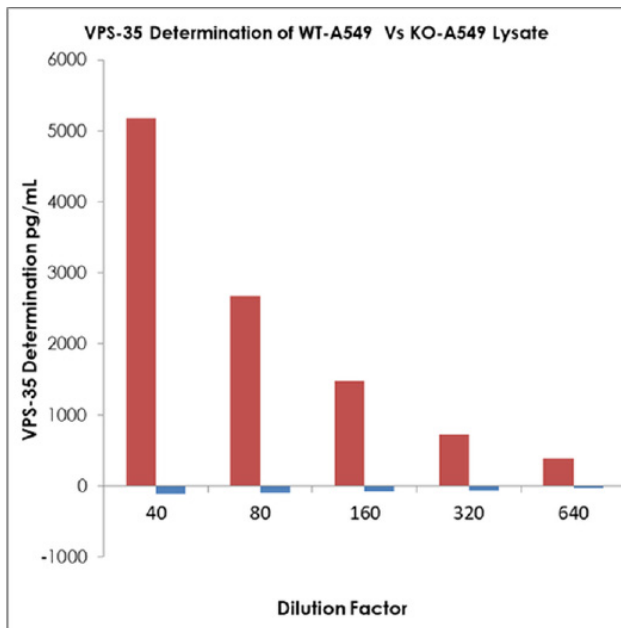


Figure 5. VPS35 Determination of Wild-Type 549 cells (Red) vs Knock-out 549 Lysates (Blue) confirmed the presence or absence of VPS35.

References

1. Vilarino-Guell, C. et al. (2011) Am J Hum Genet 89:162–167.
2. Zimprich, A. et al. (2011) Am J Hum Genet 89:168–175.
3. Rahman, A.A., Morrison, B.E. (2019) Neurosci 401:1-10.

Warranty and Limitation of Remedy

StressMarq Biosciences Inc. makes **no warranty or guarantee** of any kind, whether written or oral, expressed or implied, including without limitation, any warranty of fitness for a particular purpose, suitability and merchantability, which extends beyond the description of the chemicals hereof. StressMarq **warrants only** to the original customer that the material will meet our specifications at the time of delivery. StressMarq will carry out its delivery obligations with due care and skill. Thus, in no event will StressMarq have **any obligation or liability**, whether in tort (including negligence) or in contract, for any direct, indirect, incidental or consequential damages, even if StressMarq is informed about their possible existence. This limitation of liability does not apply in the case of intentional acts or negligence of StressMarq, its directors or its employees.

Buyer's **exclusive remedy** and StressMarq's sole liability hereunder shall be limited to a refund of the purchase price, or at StressMarq's option, the replacement, at no cost to Buyer, of all material that does not meet our specifications.

Said refund or replacement is conditioned on Buyer giving written notice to StressMarq within thirty (30) days after arrival of the material at its destination. Failure of Buyer to give said notice within thirty (30) days shall constitute a waiver by Buyer of all claims hereunder with respect to said material.

For further details, please refer to our Warranty and Refund Policy located on our website and in our catalog.

1									
2									
3									
4									
5									
6									
7									
8									
9									
10									
11									
12									
A									
B									
C									
D									
E									
F									
G									
H									

NOTES

This document is copyrighted. All rights are reserved. This document may not, in whole or part, be copied, photocopied, reproduced, translated, or reduced to any electronic medium or machine-readable form without prior consent, in writing, from StressMarq Biosciences Inc. ©01/01/2020, StressMarq Biosciences Inc., Victoria, BC Canada, All rights reserved. Printed in Canada.